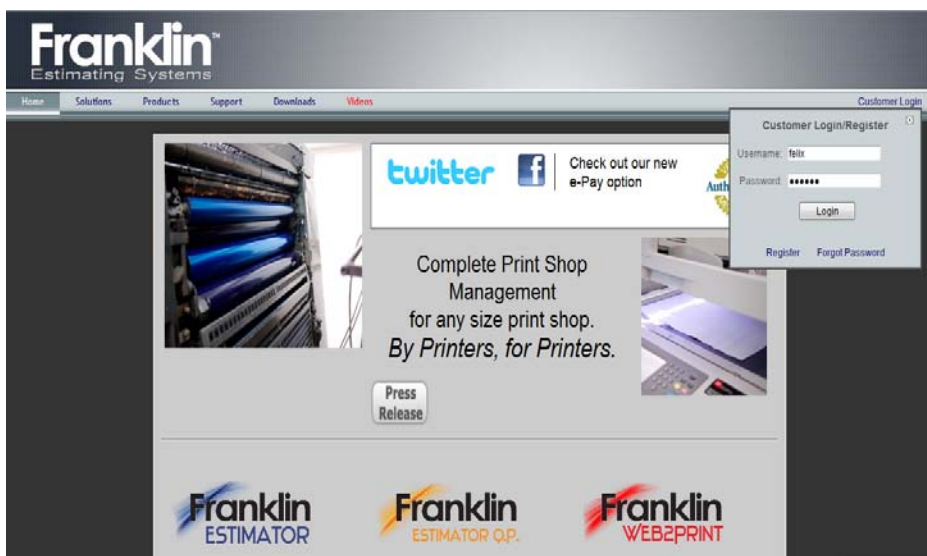


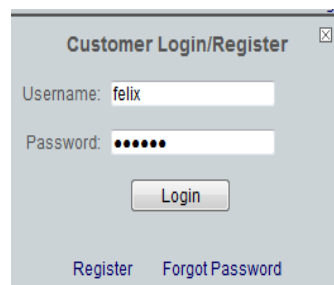
# Registering with FranklinEstimating.com

Direct your web browser to: <http://franklinestimating.com/>

You may notice that we have completely redesigned our website. If you're old username and password no longer work, we ask that you re-register with us. **You will need your Franklin Customer number as well as your Company email address we have on file here at Franklin.** If you do not know this information please call us at 800-346-7363



**Locate the Customer Login in the upper right hand corner.** Clicking will expand the login area.



**Type your username and password.** (case sensitive) Then click **Login**. To re-register, click the register option.

## Registration:

A screenshot of the 'New User Registration' form. It includes a note: '\*All fields are required.' and instructions: 'Hover over a field with your mouse for more information.' The form contains the following fields: Username, Customer Number, Customer Account E-mail, Personal E-mail, Password, Confirm Password, First Name, and Last Name. A 'Register' button is located at the bottom.

**Username:** Type in your new username


**Customer Number:** Your Franklin Estimating Customer Number.

**Customer Account E-Mail:** The E-Mail address on file at Franklin Estimating

**Personal Email:** Since each user in your company can have an individual login you can enter your personal email address here.

**Password:** Enter your new password.  
**When you are finished creating a login click Register.**

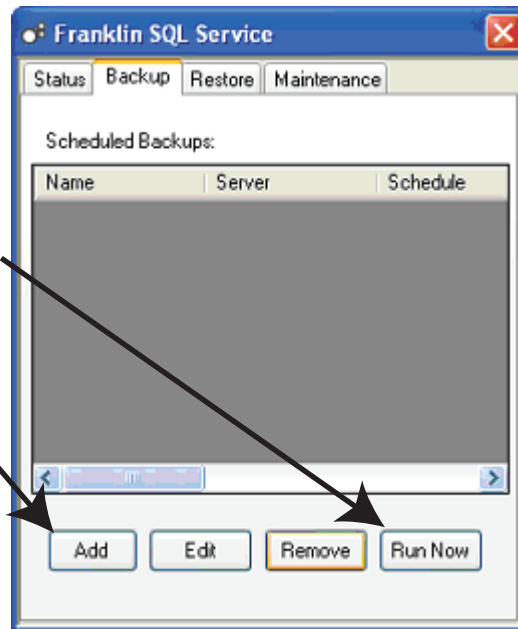
# Configuring and Using the Backup Functionality

On the Server Computer or the computer that contains your Franklin estimator Data file, Double click the set of Franklin rollers  at the bottom right corner of your computer screen (by the clock).

Click on the Backup tab.

**F** If you already have a scheduled backup select the Run Now button.

If you do not:  
Select the Add Button,  
Which will display the  
"Add scheduled Backup"  
screen.



**Backup Name:** Type in the name of your backup.

**Server:** The name of the computer with your database (SERVER\FRANKLIN\_SQL\_DAT).

**Database:** The name of the database you wish to backup (FRANKLIN\_SQL\_DAT).

**Backup File:** Click on the button to the right of the field to browse to a location you wish to store your backup file.

**Schedule Type:**

Once - Runs the backup manually, only when you click the 'Run Now' button.

Daily - Every day at the time specified.

Weekly - Opens up the option to choose one or more days per week with the checkboxes below, and runs at the time

specified on each of those days.

Monthly - Runs on the day of the month that coincides with the start date.

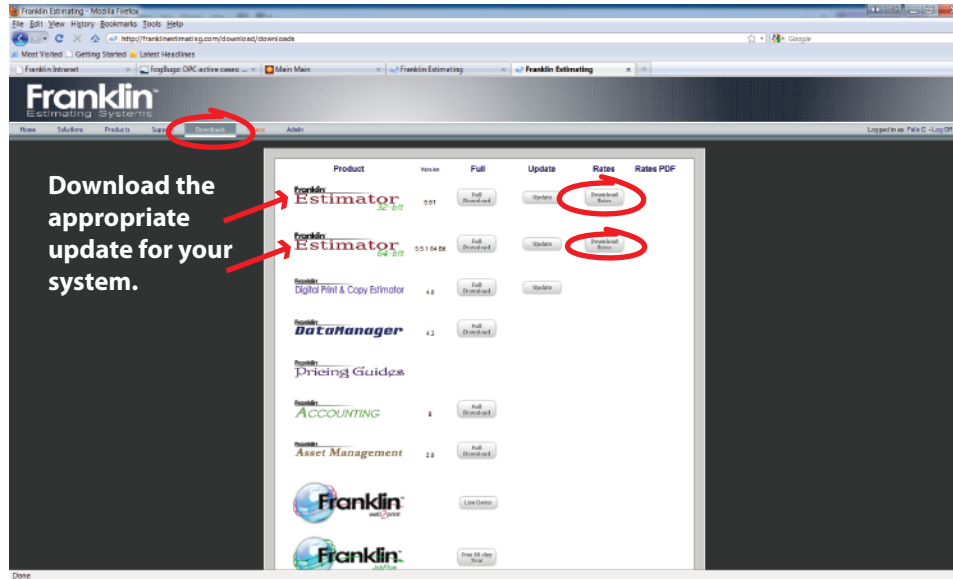
Days Before Overwrite: Sets a number of days before a particular backup file can be overwritten. This will cause the backup to fail if it is set to save again before the overwrite expires.

When you are finished creating a backup schedule click **OK**, then click **Run Now**.

# Updating Your Franklin Rates File.

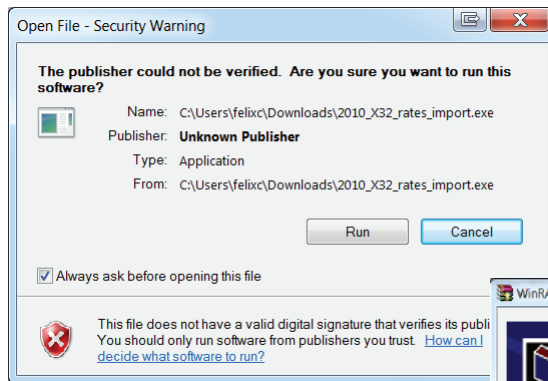
After registering or logging into our website please follow these instructions to update your Franklin Rates File to the latest 201# version, which will reflect a 1.0% increase this year.

Click on the downloads button from the taskbar or go to <http://franklinestimating.com/download/downloads>

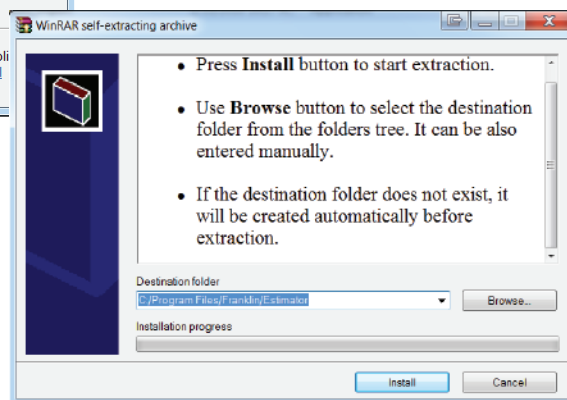


**F** See Updating your Franklin Estimator for help determining what system you are using.

After downloading Locate the file named: "201#\_X32\_rates\_import" (or 201#\_X64\_rates\_import for 64bit systems) on your hard drive. Double clicking the file will begin the extraction.



Double clicking the icon will begin the installation. To verify you wish to install at this time click **Run**.



Click **Install** to install the update to the default location on your hard drive. If you had previously changed the location of the estimator from it's default location, use the **Browse** button to select the new location.

When the installation is complete a pdf file will be displayed with the final steps of the rates file import into Estimator.

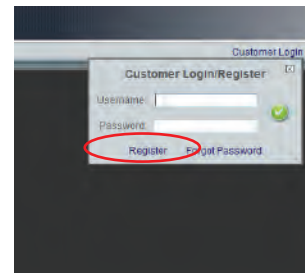
# Registering with FranklinEstimating.com

Direct your web browser to: <http://franklinestimating.com/>

You may notice that we have completely redesigned our website. If your old username and password no longer work we ask that you re-register with us. **You will need your Franklin Customer number as well as the Company email we have on file here at Franklin.** If you do not know this information please call us at 801.303.6083



Locate the Customer Login in the upper right hand corner.



**Type your username and password:**  
Then click the green checkmark. To re-register, click the register option.

## Registration

**New User Registration**

*\*All fields are required.*

Hover over a field with your mouse for more information.

Username:

Customer Number:

Customer Account E-mail:

Personal E-mail:

Password:

Confirm Password:

First Name:

Last Name:

**Username:** Type in your new username

**Customer Number:** Your Franklin Estimating Customer Number.

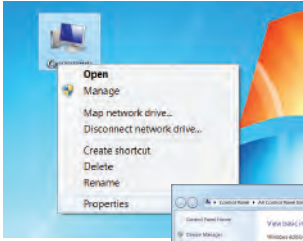
**Personal Email:** Since each user in your company can have an individual login you can enter your personal email address here.

**Password:** Enter your new password.

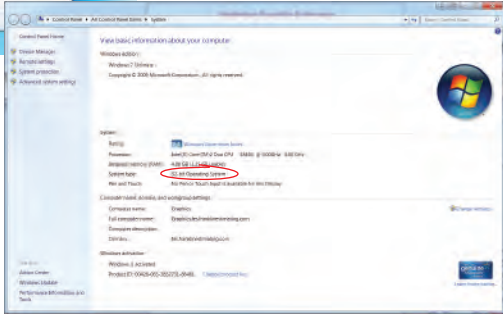
When you are finished creating a login click **Register**.

# Determining what system you are using.

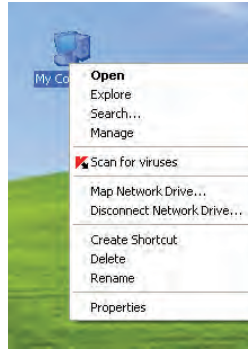
## Windows 7



Right click on the computer icon and select properties



## Windows XP



Right click on the computer icon and select properties

